

# Trauma and Injury Intelligence Group Biannual Bulletin

Ormskirk and District General Hospital Emergency Department  
October 2014 to September 2015

December 2015



Centre for Public Health,  
Faculty of Education, Health and Community,  
Liverpool John Moores University,  
Henry Cotton Campus,  
15-21 Webster Street,  
Liverpool, L3 2ET

[cph.org.uk](http://cph.org.uk)

0151 231 4500

[tiig@ljmu.ac.uk](mailto:tiig@ljmu.ac.uk)

[tiig.info](http://tiig.info)

[twitter.com/tiig\\_cph](https://twitter.com/tiig_cph)

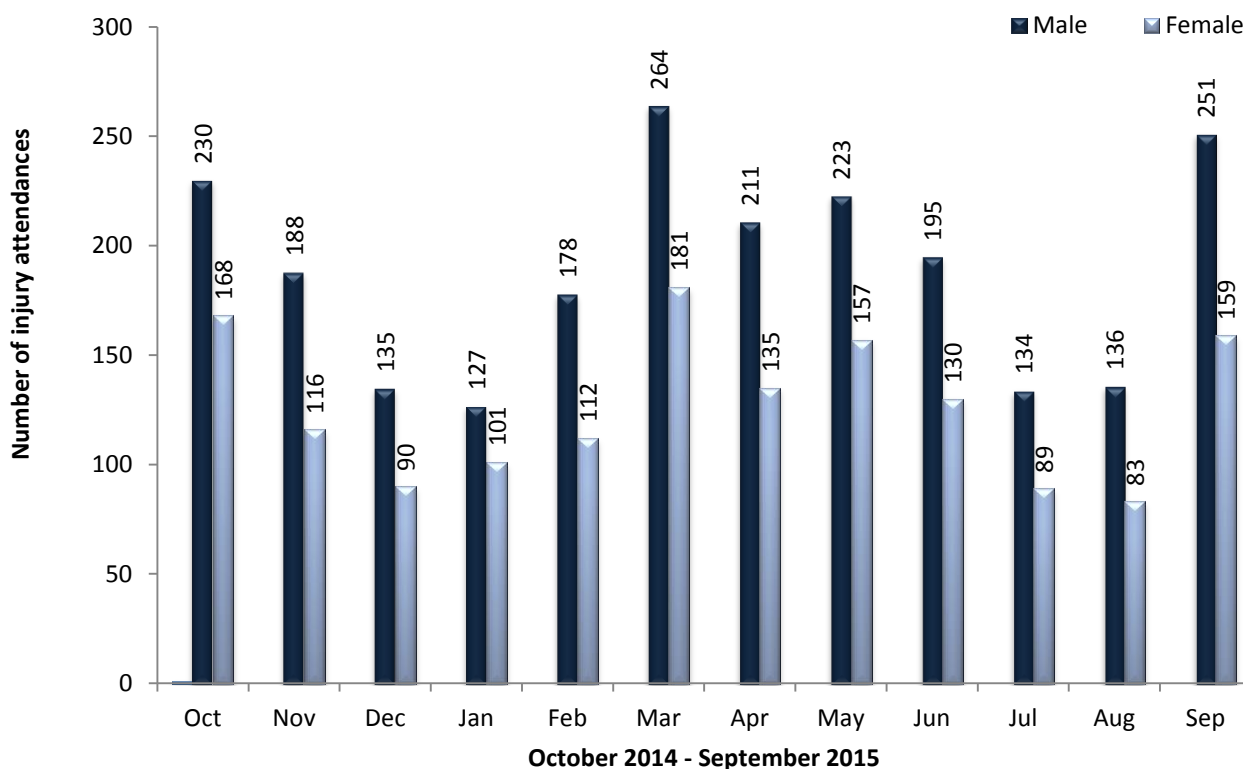
**CPH** | CENTRE FOR  
PUBLIC HEALTH  
LIVERPOOL JOHN MOORES UNIVERSITY

 LIVERPOOL  
JOHN MOORES  
UNIVERSITY

## ALL INJURY ATTENDANCES

This bulletin provides a breakdown of all injury attendances to the Paediatric Emergency Department (ED) at Ormskirk and District General Hospital between October 2014 and September 2015. In the twelve month period there were 3,794 injury attendances to the ED. Attendances, calculated as a daily average, peaked in March and September 2015 (14 per day each), while December 2014 and January, July and August 2015 had the fewest attendances (7 per day each; figure 1).

Figure 1: ED attendances by gender and month, October 2014 to September 2015<sup>^</sup>



<sup>^</sup> There were less than five records where the gender was unknown; these have been omitted from the chart.

There were more male (60%) than female attendances to the ED between October 2014 and September 2015 (n=2,272; figure 1). Over two fifths (45%) were aged between 10 and 14 years (n=1,718), just under a quarter (24%) were aged between five and nine years (n=917) and over one fifth (22%) were aged four years or less (n=834; figure 2).

**Figure 2: ED attendances by age group and month, October 2014 to September 2015**

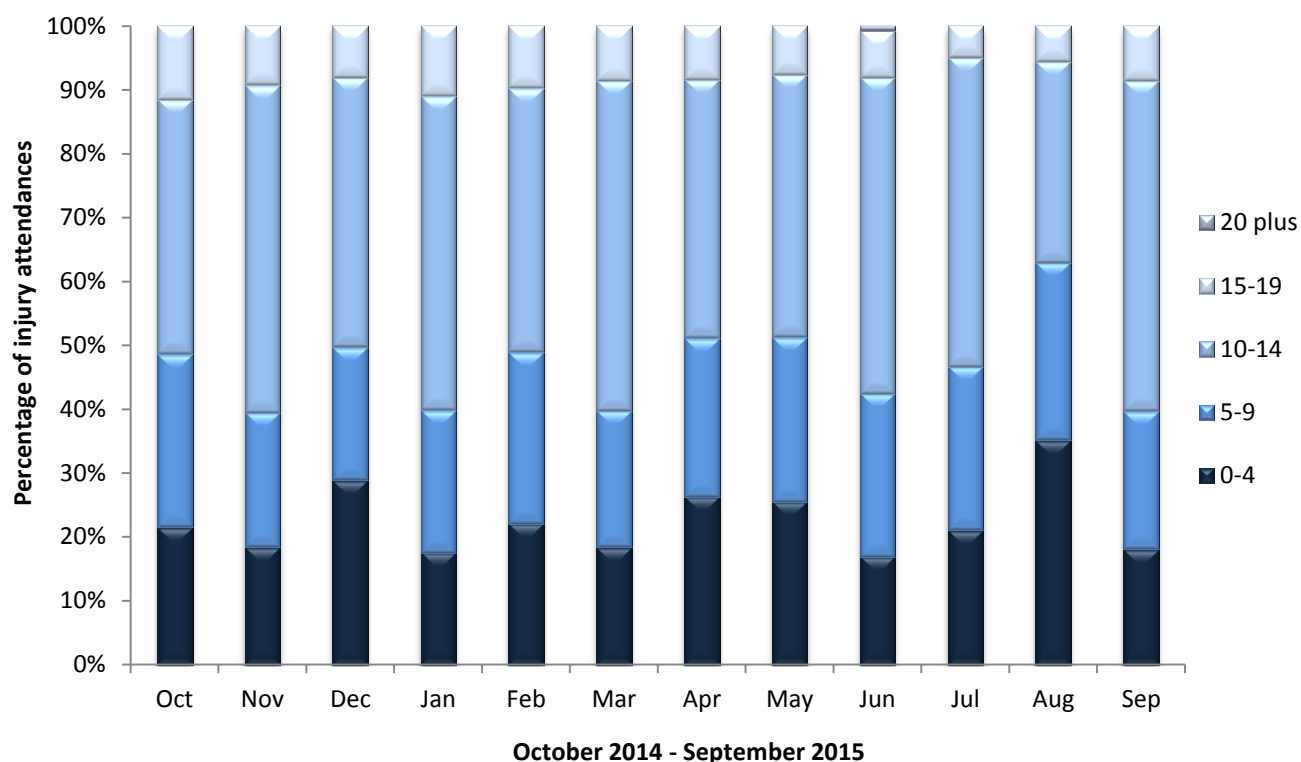


Table 1 shows the injury group of attendees to the ED between October 2014 and September 2015. Just under seven in ten (69%) of injuries were categorised as ‘other’ injuries (n=2,609) followed by a just under a quarter (24%) which were sustained by playing sport (n=901). Road traffic collisions accounted for 5% of attendances (n=192), assaults accounted for 2% of attendances (n=73) and deliberate self-harm (n=19) accounted for 1%.

**Table 1: ED attendances by injury group and month, October 2014 to September 2015<sup>1,#</sup>**

Injury group	Oct	Nov	Dec	Jan	Feb	Mar	Apr	May	Jun	Jul	Aug	Sep	Total	%
<b>Other injury</b>	238	216	167	159	203	277	257	261	232	150	170	279	2609	69%
<b>Sports injury</b>	129	73	38	49	71	139	68	86	71	49	16	112	901	24%
<b>Road traffic collision</b>	23	<10	14	14	10	17	14	20	15	16	26	<20	192	5%
<b>Assault</b>	<10	6	<10	<10	***	7	<10	<15	<10	8	<10	***	73	2%
<b>Deliberate self-harm</b>	***	***	***	***	***	5	***	***	***	0	***	0	19	1%
<b>Total</b>	399	304	225	228	290	445	346	380	325	223	219	410	3794	100%

# Due to low numbers, firework injuries have been included in the ‘other’ injury category (n<5).

The referral source to the ED is displayed in table 2. The majority (92%) of injury presentations were recorded as self-referred (n=3,508); 3% of total attendances were recorded as ‘other’ (n=107) and referred by a health care provider (n=97).

<sup>1</sup> Please note that all numbers less than five have been suppressed (\*\*\*) in line with patient confidentiality. If there is only one number less than five in a category then two numbers have been suppressed to prevent back calculations from totals.

**Table 2: ED attendances by referral source and month, October 2014 to September 2015<sup>1</sup>**

Referral source	Oct	Nov	Dec	Jan	Feb	Mar	Apr	May	Jun	Jul	Aug	Sep	Total	%
Self-referral	369	283	209	212	273	411	323	343	302	204	198	381	3508	92%
Other	15	8	<10	***	7	7	7	12	9	9	10	13	108	3%
Health care provider: same or other	7	9	***	8	***	16	8	10	5	7	8	12	97	3%
Emergency services	<10	0	***	0	***	5	***	7	***	***	***	***	35	1%
General medical practitioner	0	***	***	***	5	***	***	***	***	***	***	***	32	1%
Educational establishment	***	***	0	0	***	***	***	***	***	0	0	0	<15	0%
Police	0	0	0	0	0	***	0	***	***	0	0	0	***	0%
<b>Total</b>	<b>399</b>	<b>304</b>	<b>225</b>	<b>227</b>	<b>290</b>	<b>445</b>	<b>346</b>	<b>380</b>	<b>325</b>	<b>223</b>	<b>219</b>	<b>410</b>	<b>3794</b>	<b>100%</b>

Two fifths (40%) of incidents occurred in a public place (n=1,516) followed by 29% which occurred in the home (n=1,084) and 24% which occurred in an educational establishment (n=911; table 3).

**Table 3: ED attendances by incident location and month, October 2014 to September 2015<sup>1</sup>**

Incident location	Oct	Nov	Dec	Jan	Feb	Mar	Apr	May	Jun	Jul	Aug	Sep	Total	%
Public place	144	110	72	86	105	140	157	168	131	112	114	177	1516	40%
Home	91	83	81	61	86	112	114	117	85	62	85	107	1084	29%
Educational establishment	121	74	44	70	83	171	53	<80	81	30	***	107	911	24%
Other	<50	37	27	11	<15	<25	22	<20	28	19	<20	19	415	11%
Work	***	0	0	0	***	***	0	***	0	0	0	0	6	0%
<b>Total</b>	<b>399</b>	<b>304</b>	<b>224</b>	<b>228</b>	<b>289</b>	<b>445</b>	<b>346</b>	<b>380</b>	<b>325</b>	<b>223</b>	<b>219</b>	<b>410</b>	<b>3794</b>	<b>100%</b>

The disposal method for injury attendances is displayed in table 4. Just under seven in ten (63%) attendees were discharged from hospital with no follow-up treatment required (n=2,398), while 11% were referred to the fracture clinic (n=416).

**Table 4: ED attendances by disposal method and month, October 2014 to September 2015<sup>1,2</sup>**

Disposal method	Oct	Nov	Dec	Jan	Feb	Mar	Apr	May	Jun	Jul	Aug	Sep	Total	%
Discharged - no follow-up	261	183	123	162	175	289	201	252	193	143	139	277	2398	63%
Referred to fracture clinic	31	23	33	19	32	52	47	42	45	26	18	48	416	11%
Discharged - follow-up by other HCP	12	38	28	26	53	43	43	45	33	21	32	15	389	10%
Referred to ED clinic	15	20	12	9	12	26	20	19	22	13	14	31	213	6%
Other	7	23	8	<10	5	12	12	8	11	***	6	17	118	3%
Admitted to hospital	12	7	7	***	8	13	12	6	11	7	<10	13	106	3%
Referred to other health care professional	53	***	0	0	***	6	6	***	5	***	***	***	83	2%
Referred to other outpatient clinic	***	5	<10	***	***	0	***	***	***	***	***	6	28	1%
Left department before being treated	***	***	7	0	***	***	***	***	0	***	0	***	24	1%
Transferred to other HCP	5	0	***	***	0	***	***	***	***	***	0	0	<20	0%
Unknown	0	0	0	0	0	0	0	***	0	0	0	0	***	0%
<b>Total</b>	<b>399</b>	<b>304</b>	<b>225</b>	<b>228</b>	<b>290</b>	<b>445</b>	<b>346</b>	<b>380</b>	<b>325</b>	<b>223</b>	<b>219</b>	<b>410</b>	<b>3794</b>	<b>100%</b>

## ASSAULT ATTENDANCES

Between October 2014 and September 2015 there were 73 assault attendees presenting to Ormskirk and District General Hospital. The majority (74%) of assault attendees were male (n=54). Seven in ten (70%) were aged between 10 and 14 years (n=51) and 19% were aged between 15 and 19 years (n=14). Just over a half (51%) assaults occurred in a public place (n=37), while 30% occurred in an educational establishment (n=22). The majority (59%) of assault attendees were discharged from hospital with no follow-up treatment required (n=43).

<sup>2</sup> HCP = Health Care Professional.